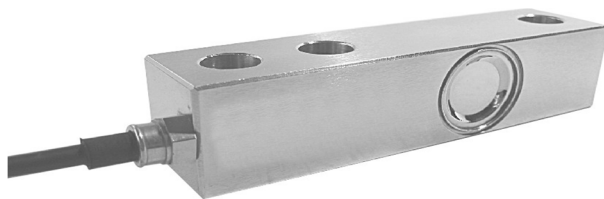


Single Ended Load Cell



Features:

- Available in electro less nickel or stainless steel construction.
- Matched outputs make corner adjustments un-necessary in most applications.
- Load Cells are 100% tested to guarantee load and thermal specifications are met or exceeded.
- High accuracy 0.02% combined error.
- Wide range of "purpose built" stainless steel and plated mounts & accessories.
- Popular Capacities -50kg to 20,000kg
- Hermetically sealed IP68* rating.
- Laser* welded construction. Most similar load cells have only bonded seals
- NMI (Trade) approved models.(S526)
- International Load cell bolt pattern.

Applications:

- All Floor Scales
- Batch Weighing
- Hopper Filling & Level Control
- Food and Chemical Industry
- Bagging and Filling Machines
- Inventory Control – By Weight
- Shipping Scales
- Cattle Scales
- All Agricultural Applications

Specification

Capacity	50kg-20,000kg	Excitation	5VDC to 12VDC
Safe Overload	100% Capacity	Excitation (Maximum)	18VDC
Ultimate Load	300% Capacity	Input Resistance	385 Ω (±) 10 Ω
Safe Side Load	100% Capacity	Output Resistance.	350 Ω (±) 3Ω
Full Load Output	2m V/V (±) 0.10%	Insulation	>5,000MΩ
Combined Error	<0.03% FS		
Non Repeatability	<0.01% FS		
Creep/Zero Return	<0.02% FS		
Zero Balance	<1% FS		
Span Temperature	<20ppm °C		
Zero Temperature	<20ppm °C		
Compensated	-10 °C to + 50 °C		
Operating Range	-20 °C to + 65 °C		